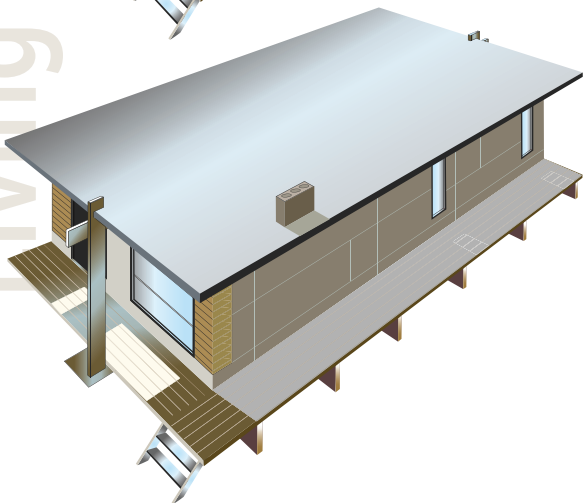
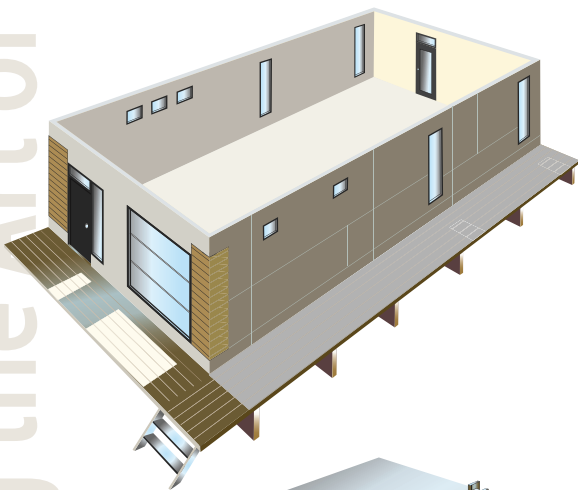
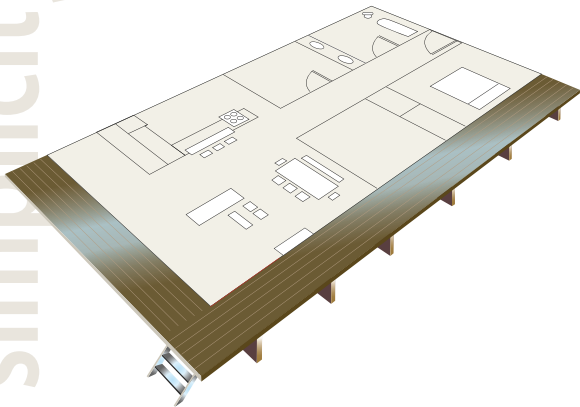
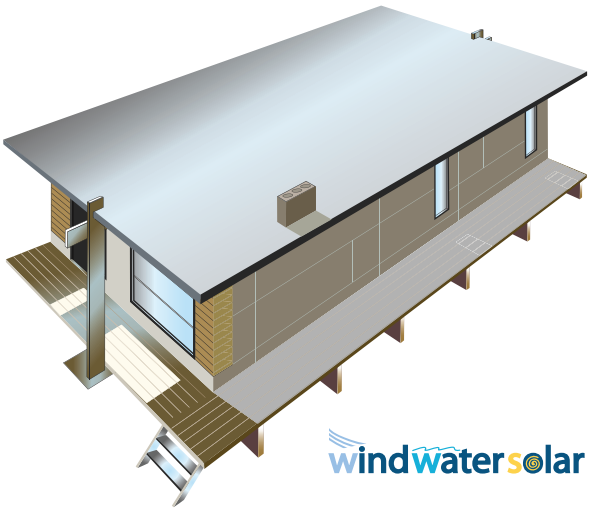


Living the Art of simplicity





INEX**DESIGN**STUDIO has developed an innovative and potentially revolutionary design, — an eco-friendly prefab house available to the mass market — *way ahead of the curve.*

Patrick Jacob's, (owner of INEX**DESIGN**STUDIO) passion for this project centres on the uniqueness of architecture . . . allowing the general public to ask the question — *why?* — hence, the opportunity to educate.

Wind, water, solar, fuel cells and other new energies are ever-changing and advancing. Our communities now, are beginning to see the advantages and future generations will surely see the benefits..

Designed to be delivered on one truck, INEX**DESIGN**S' prefab shell comes in at a budget of about \$25,000 before the cost of land. These 720 sq. ft. homes can be offset in small clusters with interiors ready to be customized to meet the unique requirements of each home-owner.

INEXDESIGNSTUDIO
 information ph: 780.919.0687
 info@inexdesignstudio.com
 www.inexdesignstudio.com
 POLYCORE CANADA INC

Advanced building technology

Pre - engineered prefab building for residential, cottage and business

Energy efficient R factors R65 base R36 walls and R46 roof.

Environmentally friendly product

Unique foundation system

Time for lock up stage approx. one week

Design and building of pre-engineered prefab shell and finishing construction by Inexdesignstudio

Engineering and building product by Polycore Canada Inc.